

Description

- AM Ceramic filters are connected in a ladder structure and are available as either 4/6 element devices
- Bandwidths from 6 to 30 kHz

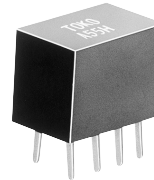
Features

- 450, 455 kHz, (460kHz and 486kHz by special request)
- High selectivity
- Compact package
- Version with group delay variations specified also available
- Lead-free terminations

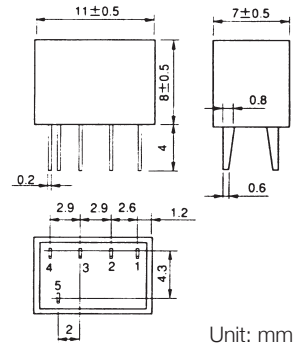
Applications

- AM radio cassettes, AM stereo sets
- Cordless telephones, pagers
- Two-way radios

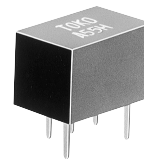
Dimensions



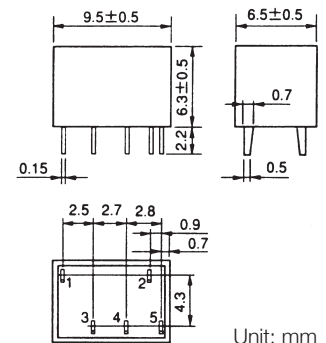
LFY



Unit: mm



LFYM



Unit: mm

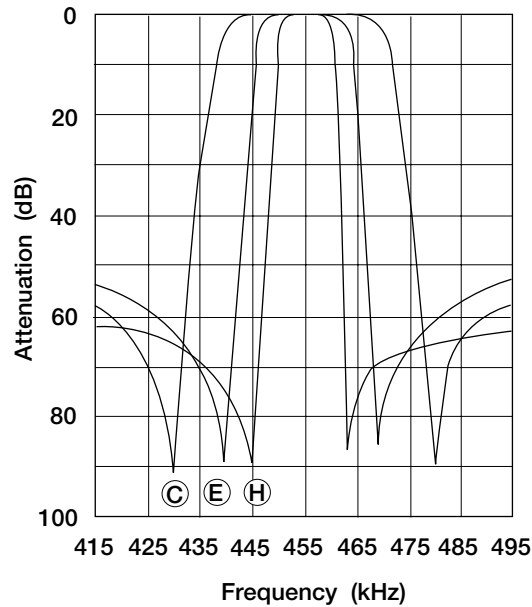
STANDARD FILTERS SELECTION GUIDE

| TYPE LFY/LFYM | | | | | | |
|------------------|--------------------------|-------------------------|--------------------------|-------------------------------|---------------------|-----------------------------|
| TOKO Part Number | Center * Frequency (kHz) | Bandwidth at 6 dB (kHz) | Bandwidth at 50 dB (kHz) | Attenuation fo ± 100 KHz (dB) | Insertion Loss (dB) | Input/Output Impedance (kΩ) |
| LFY | | | | | | |
| ALFY455H | 455±1.0 | ±3.0 min. | ±9.0 min. | 35.0 max. | 6.0 max. | 2.0 |
| ALFY455G | 455±1.0 | ±4.5 min. | ±10.0 min. | 35.0 max. | 6.0 max. | 2.0 |
| ALFY455F | 455±1.0 | ±6.0 min. | ±12.5 min. | 35.0 max. | 6.0 max. | 2.0 |
| ALFY455E | 455±1.0 | ±7.5 min. | ±15.0 min. | 35.0 max. | 6.0 max. | 1.5 |
| BLFY455D | 455±2.0 | ±10.0 min. | ±20.0 min. | 35.0 max. | 4.0 max. | 1.5 |
| BLFY455C | 455±2.0 | ±12.5 min. | ±24.0 min. | 35.0 max. | 4.0 max. | 1.5 |
| BLFY455B | 455±2.0 | ±15.0 min. | ±30.0 min. | 35.0 max. | 4.0 max. | 1.5 |
| LFYM | | | | | | |
| ALFYM455H | 455±1.0 | ±3.0 min. | ±9.0 min. | 35.0 max | 6.0 max. | 2.0 |
| ALFYM455G | 455±1.0 | ±4.5 min. | ±10.0 min. | 35.0 max | 6.0 max. | 2.0 |
| ALFYM455F | 455±1.0 | ±6.0 min. | ±12.5 min. | 35.0 max | 6.0 max. | 2.0 |
| ALFYM455E | 455±1.0 | ±7.5 min. | ±15.0 min. | 35.0 max | 6.0 max. | 1.5 |
| BLFYM455D | 455±2.0 | ±10.0 min. | ±20.0 min. | 35.0 max | 4.0 max. | 1.5 |
| BLFYM455C | 455±2.0 | ±12.5 min. | ±24.0 min. | 35.0 max | 4.0 max. | 1.5 |
| BLFYM455B | 455±2.0 | ±15.0 min. | ±30.0 min. | 35.0 max | 4.0 max. | 1.5 |

* For 450kHz, substitute 450 for 455 in part number.

Frequency Response

LFY / LFYM (6 element)



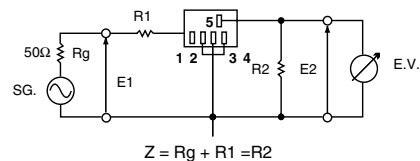
Bandwidth Rank:
 C = ±12.5kHz
 E = ±7.5kHz
 H = ±3kHz

Test Circuit

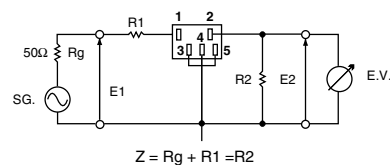
Test Conditions

1. C includes test circuit capacitance.
2. R₁, R₂: Input-output impedance
 Cs: Stray capacitance
 (less than 50pF, including EV)

LFY Test circuit



LFYM Test circuit



The information furnished by TOKO, Inc. is believed to be accurate and reliable. However, TOKO reserves the right to make changes or improvements in the design, specification or manufacture of its products without further notice. TOKO does not assume any liability arising from the application or use of any product or circuit described herein, nor for any infringements of patents or other rights of third parties which may result from the use of its products. No license is granted by implication or otherwise under any patent or patent rights of TOKO, Inc.